



**BOARD OF COMMISSIONERS**

- Kari K. Steele  
*President*
- Patricia Theresa Flynn  
*Vice President*
- Marcelino Garcia  
*Chairman of Finance*
- Precious Brady-Davis
- Yumeka Brown
- Cameron Davis
- Beth McElroy Kirkwood
- Eira L. Corral Sepúlveda
- Sharon Waller

**Metropolitan Water Reclamation District of Greater Chicago**

100 EAST ERIE STREET CHICAGO, ILLINOIS 60611-3154 312.751.5600

**Darlene A. LoCascio**  
Director of Procurement and Materials Management

312.751.6600 f: 312.894.2011  
darlene.locascio@mwr.org

April 14, 2026

Dear Bidder:

Enclosed herewith is "Notice of Revision and Addendum in Contract Documents," Addendum 11, consisting of two (2) pages and other attachments as referenced in the addendum. This addendum is dated April 14, 2026, and pertains to Contract 21-092-3P, "Battery E Activated Sludge Facility, O'Brien Water Reclamation Plant."

Proposers must download Addendum 11 and the attachments in their entirety from the District's Portal at [www.mwr.org](http://www.mwr.org). The path is as follows: **Doing Business**→**Procurement and Materials Management**→**Contract Announcements**. Scroll to Contract 21-092-3P and click "Addenda" to obtain this and all other addenda. If you are unable to download this addendum or any other contract documents, please email the Contract Desk at [contractdesk@mwr.org](mailto:contractdesk@mwr.org) or call (312) 751-6629 for assistance.

The Notice must also be signed, dated, inserted in the Contract Documents, and submitted with the Proposal, OR the Bidder may identify the addendum number in the space provided on the Proposal signature page.

Very truly yours,

Darlene A. LoCascio  
Director of Procurement and  
Materials Management

Attachment

Acknowledgment of receipt of the above-cited Notice:

DATE \_\_\_\_\_

NAME \_\_\_\_\_

FIRM \_\_\_\_\_

SIGNED \_\_\_\_\_

**Metropolitan Water Reclamation District of Greater Chicago**

100 EAST ERIE STREET CHICAGO, ILLINOIS 60611-3154 312.751.5600

**NOTICE OF REVISION AND ADDENDUM IN CONTRACT DOCUMENTS**

**ADDENDUM 11**

**APRIL 14, 2026**

**CONTRACT 21-092-3P  
BATTERY E ACTIVATED SLUDGE FACILITY  
O'BRIEN WATER RECLAMATION PLANT**

All bidders are hereby notified of the following revisions:

**Volumes 2 and 3 of 4 – Specifications**

1. SECTION 01783 – PAGE 6X

Refer to Paragraph 3.03 G.1.b.(2).

Delete the wording “7 MGD” and replace it with “2 MGD” at the end of the second sentence.

2. SECTION 15083 – PAGE 6

Refer to Subsection 3.04 A.1.

Add the wording “(identified on the drawings as HW)” at the end of the first sentence.

Refer to Subsection 3.04 A.2.

Add the wording “(identified on the drawings as WP, W, & CW)” at the end of the first sentence.

Refer to Subsection 3.04 A.3.

Add the wording “(identified on the drawings as WNP)” at the end of the first sentence.

3. SECTION 15083 – PAGE 7

Refer to Subsection 3.04 A.3.

Delete the wording “Buried” and replace it with “Buried (Less than 5 feet)”.

4. SECTION 15083 – PAGE 7

Delete Subsection 3.04 B.

5. PLANS

The following revised plans are included in this Addendum. The revised plans replace previously issued plans having corresponding sheet numbers:

| <u>PAGE NO.</u> | <u>SHEET NO.</u> | <u>REV#</u> | <u>TITLE OF SHEET</u>                      |
|-----------------|------------------|-------------|--|
| 16              | LP-004           | 3           | STARTUP TEMPORARY PUMPING AND PIPING       |
| 32              | C-016            | 2           | STANDARD DETAILS - 5                       |
| 227             | A-403            | 2           | ELEVATIONS                                 |
| 239             | A-415            | 2           | ARCHITECTURAL SCHEDULES                    |
| 347             | PB-001           | 4           | PLUMBING NOTES, SYMBOLS, AND ABBREVIATIONS |

This Notice must also be signed, dated, inserted in the Contract Documents, and submitted with the Proposal, OR the Bidder may identify the addendum number in the space provided on the Proposal signature page.



Catherine A. O'Connor  
Director of Engineering

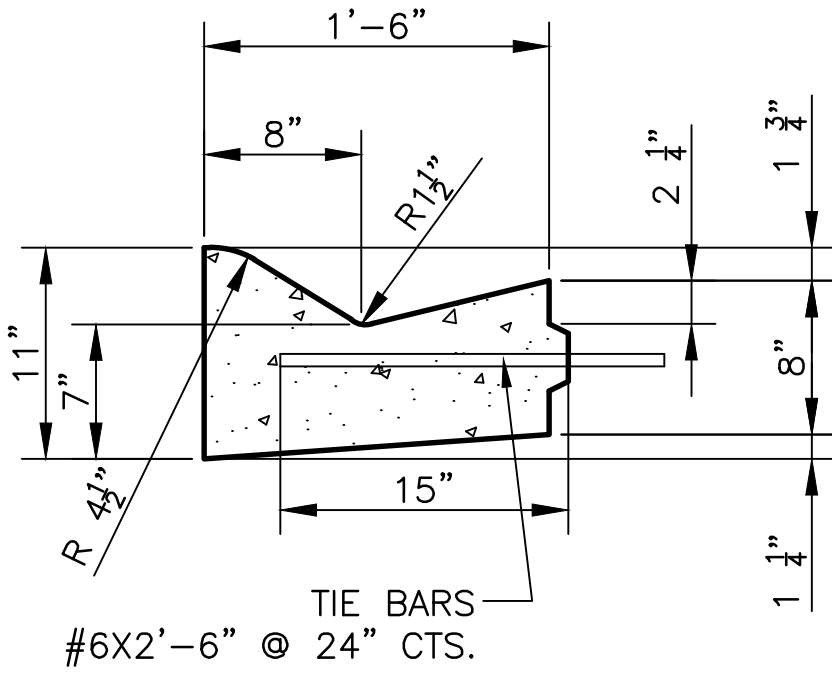


Darlene A. LoCascio  
Director of Procurement and  
Materials Management

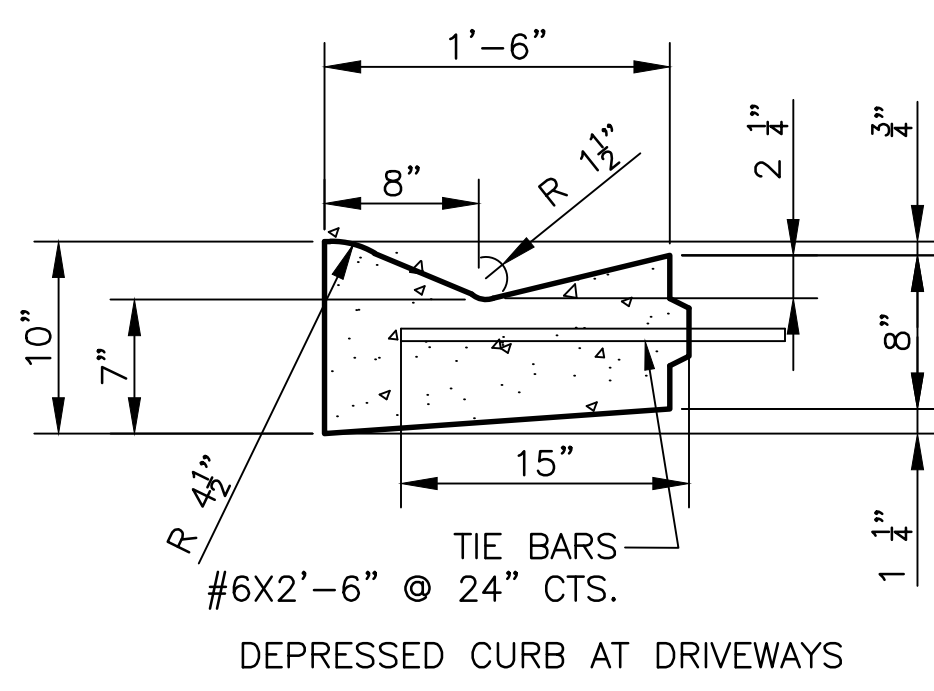
The bidder acknowledges that he/she has read this Notice of Revision, dated April 14, 2026, to the Contract Documents and that he/she has taken the provisions thereof into consideration when preparing and submitting this Proposal.



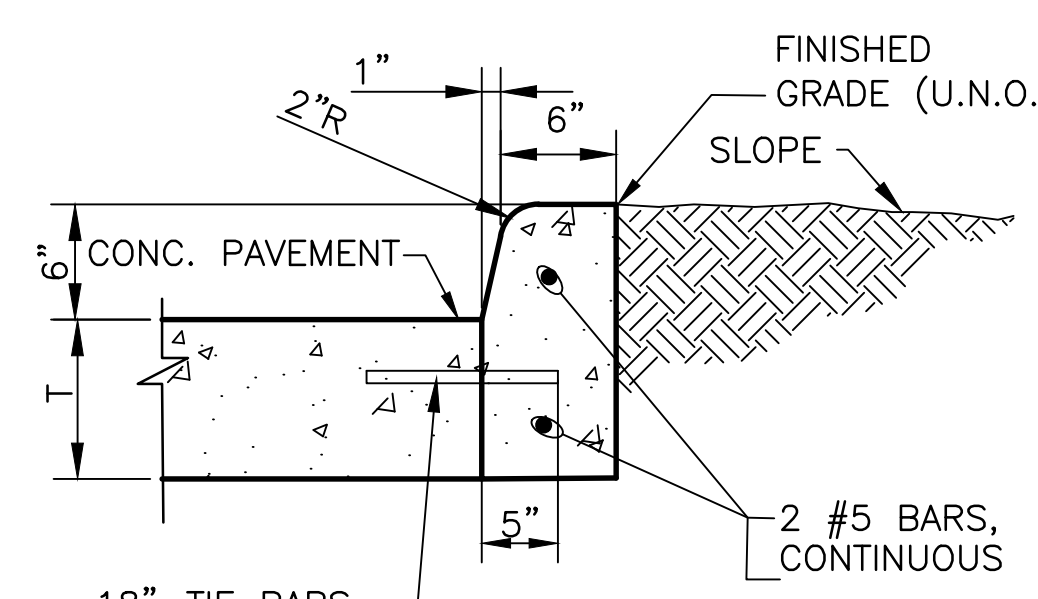
C:\Contracts\21-092-3P\Civil\Sheets\C-016-rev2.dwg 4/14/2026 12:32 PM  
 PLOT DATE: 4/14/2026 12:34 PM PLOTTED BY: CHU, HHSING



**1** CONC CURB & GUTTER, TYPE A  
SCALE: NTS

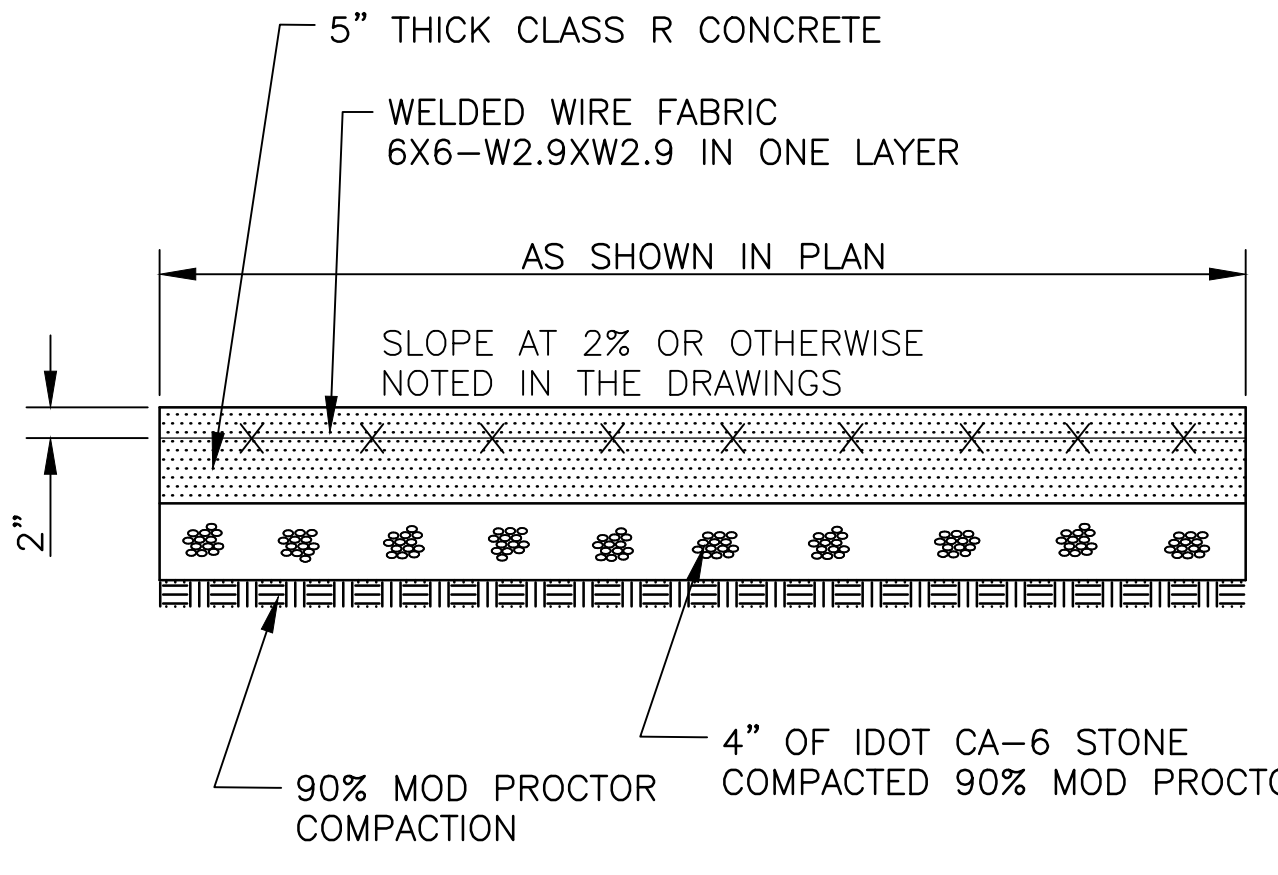


**2** CONC CURB & GUTTER, TYPE B  
SCALE: NTS

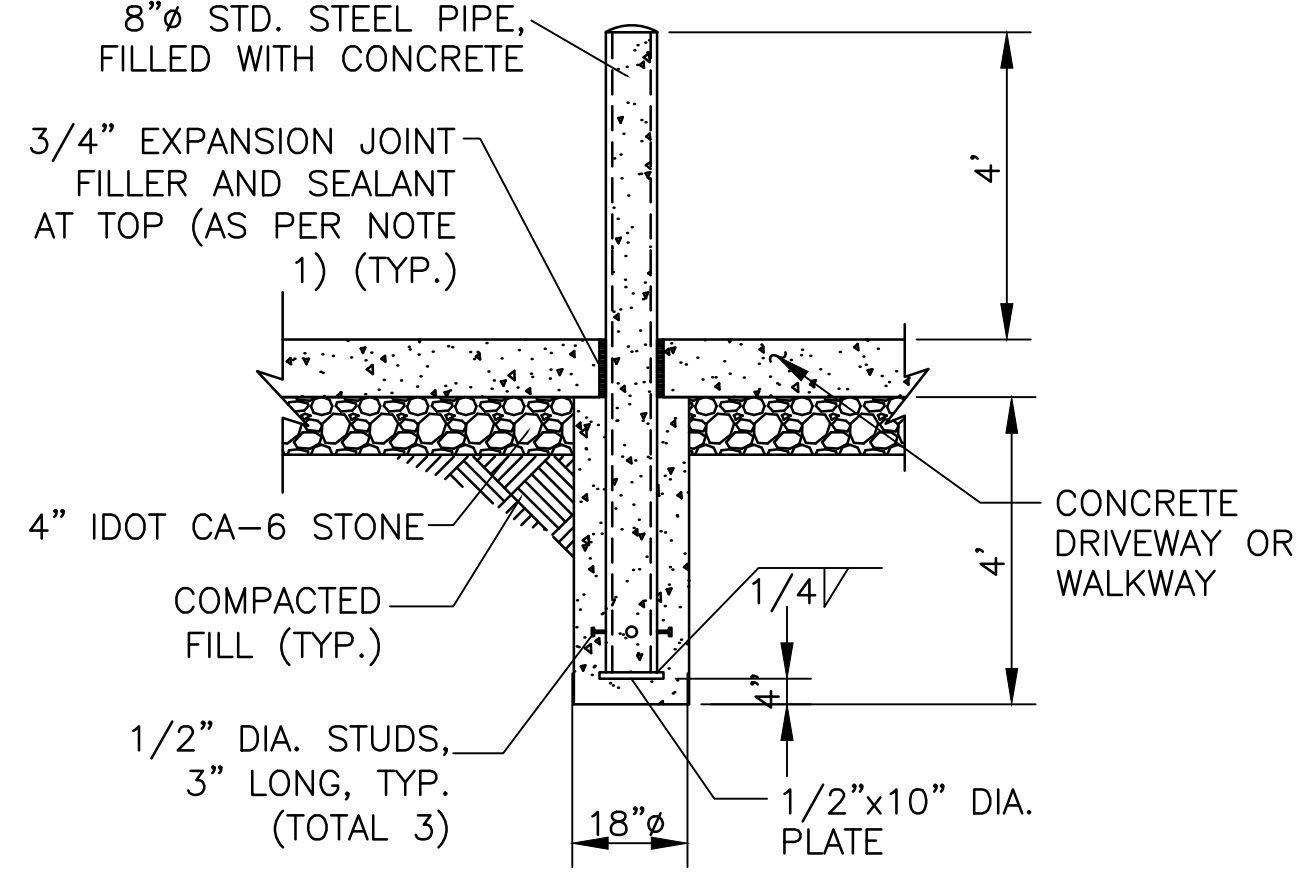


**3** CONC CURB, TYPE C  
SCALE: NTS

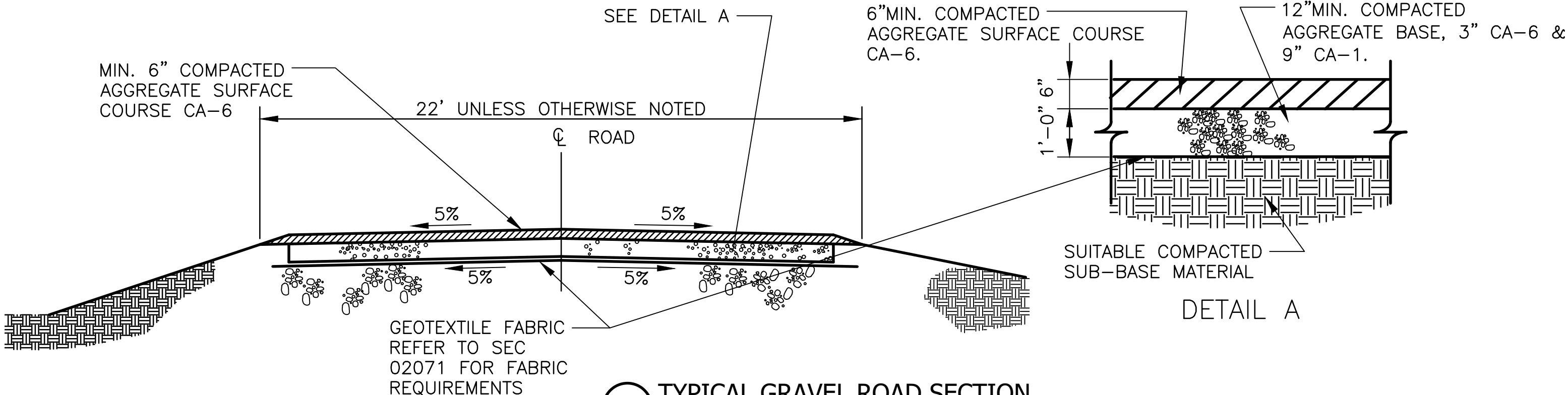
- NOTES:
1. ALL EXPOSED EDGES OF THE CURB SHALL BE ROUNDED.
  2. T = THICKNESS OF PAVEMENT



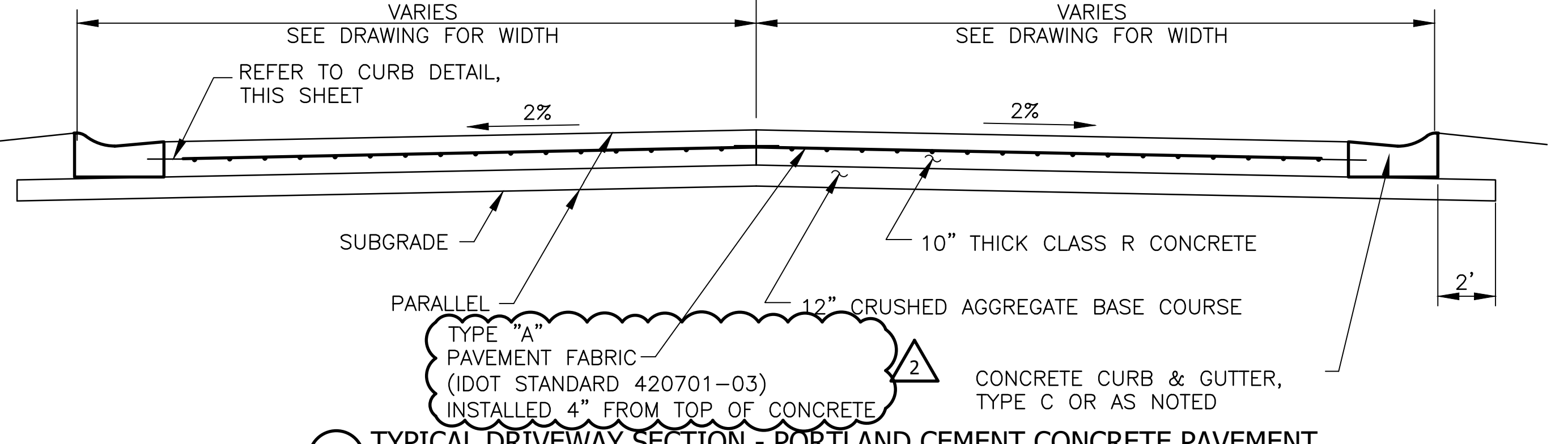
**4** WALKWAY/LANDING DETAIL  
SCALE: NTS



**5** BOLLARD DETAIL  
SCALE: NTS



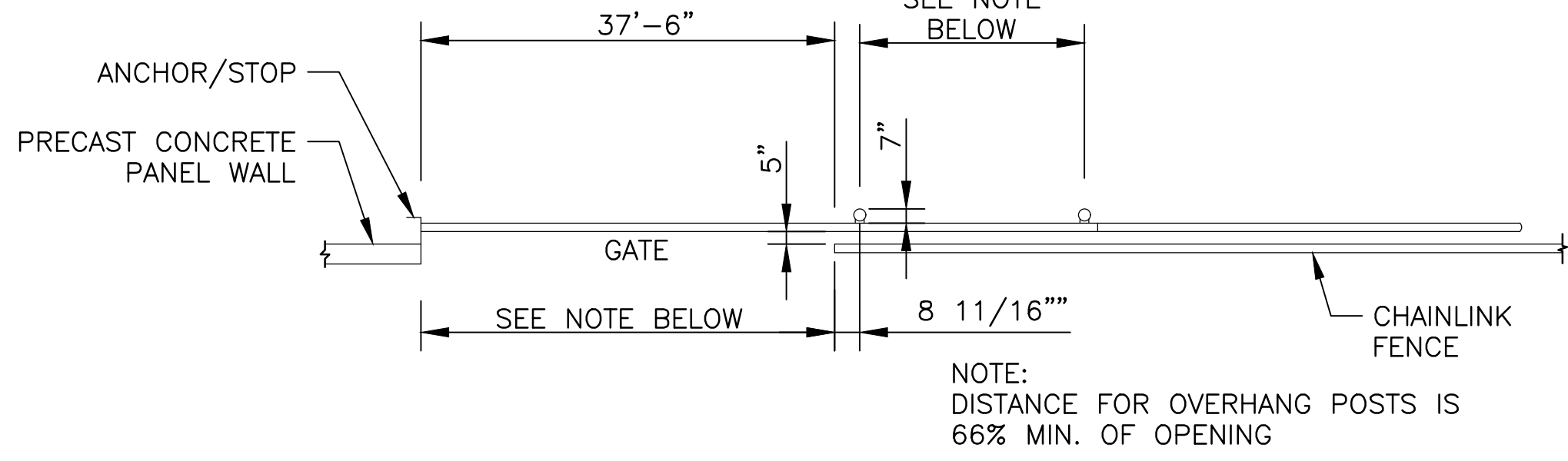
**7** TYPICAL GRAVEL ROAD SECTION  
SCALE: NTS



**8** TYPICAL DRIVEWAY SECTION - PORTLAND CEMENT CONCRETE PAVEMENT  
SCALE: NTS

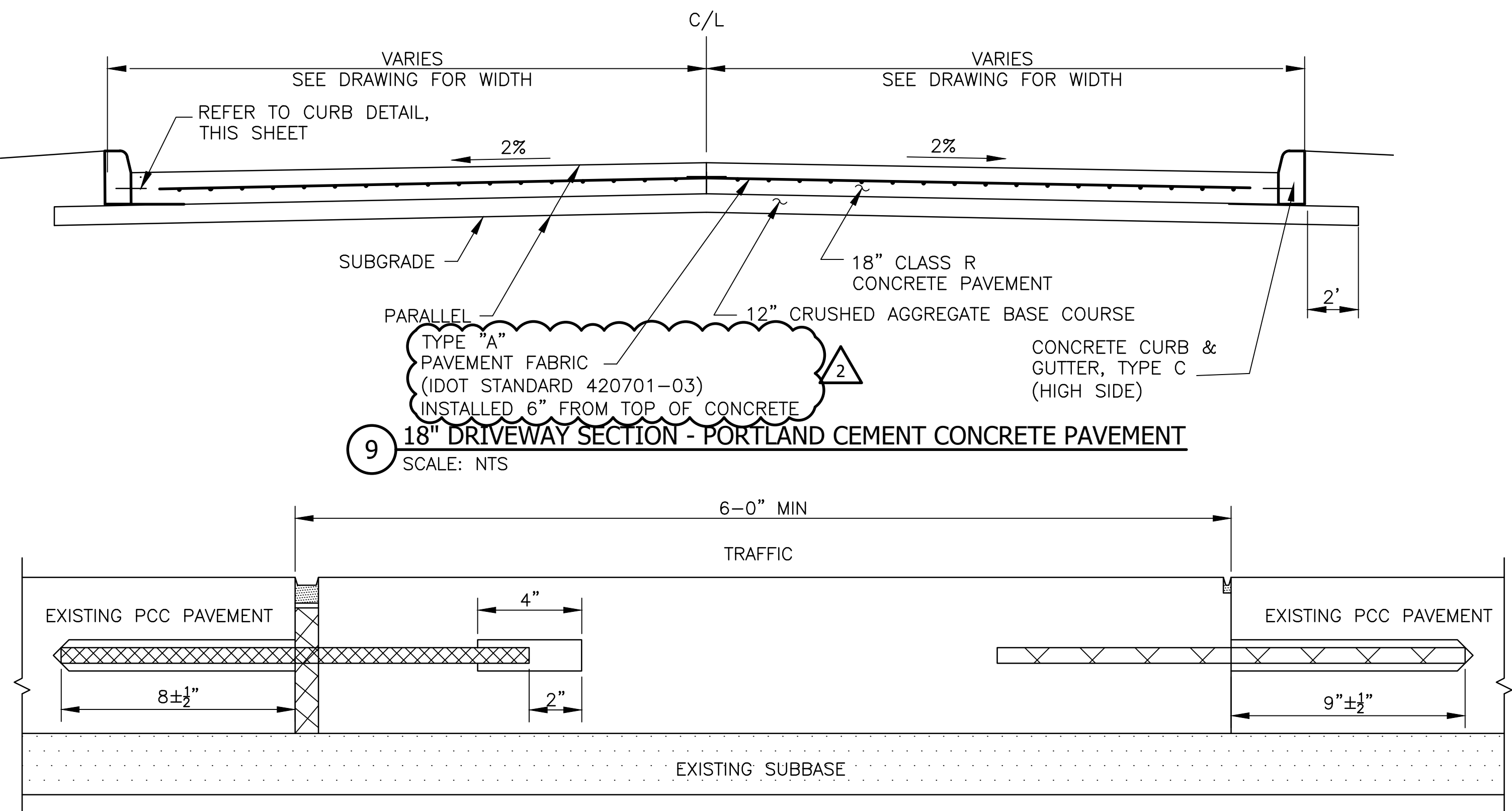
| DOWEL BAR TABLE (DETAIL 9) |                    |               |
|----------------------------|--------------------|---------------|
| PAVEMENT THICKNESS         | DOWEL BAR DIAMETER | HOLE DIAMETER |
| 10 (250 OR GREATER)        | 1 1/2 (38)         | 1 3/8 (41)    |
| 8 (200) THRU 9.99 (249)    | 1 1/4 (32)         | 1 3/8 (35)    |
| LESS THAN 8 (200)          | 1 (25)             | 1 1/8 (29)    |

- NOTES:
1. SCREENING WALL PANELS, COLUMNS, AND CONNECTIONS TO BE DESIGNED BY A STRUCTURAL ENGINEER LICENSED IN THE STATE OF ILLINOIS, RETAINED BY THE CONTRACTOR.
  2. CONTRACTOR SHALL SUBMIT SHOP DRAWINGS AND CALCULATIONS FOR THE SCREENING WALL, STAMPED BY THE STRUCTURAL ENGINEER OF RECORD, FOR DISTRICT REVIEW AND APPROVAL.

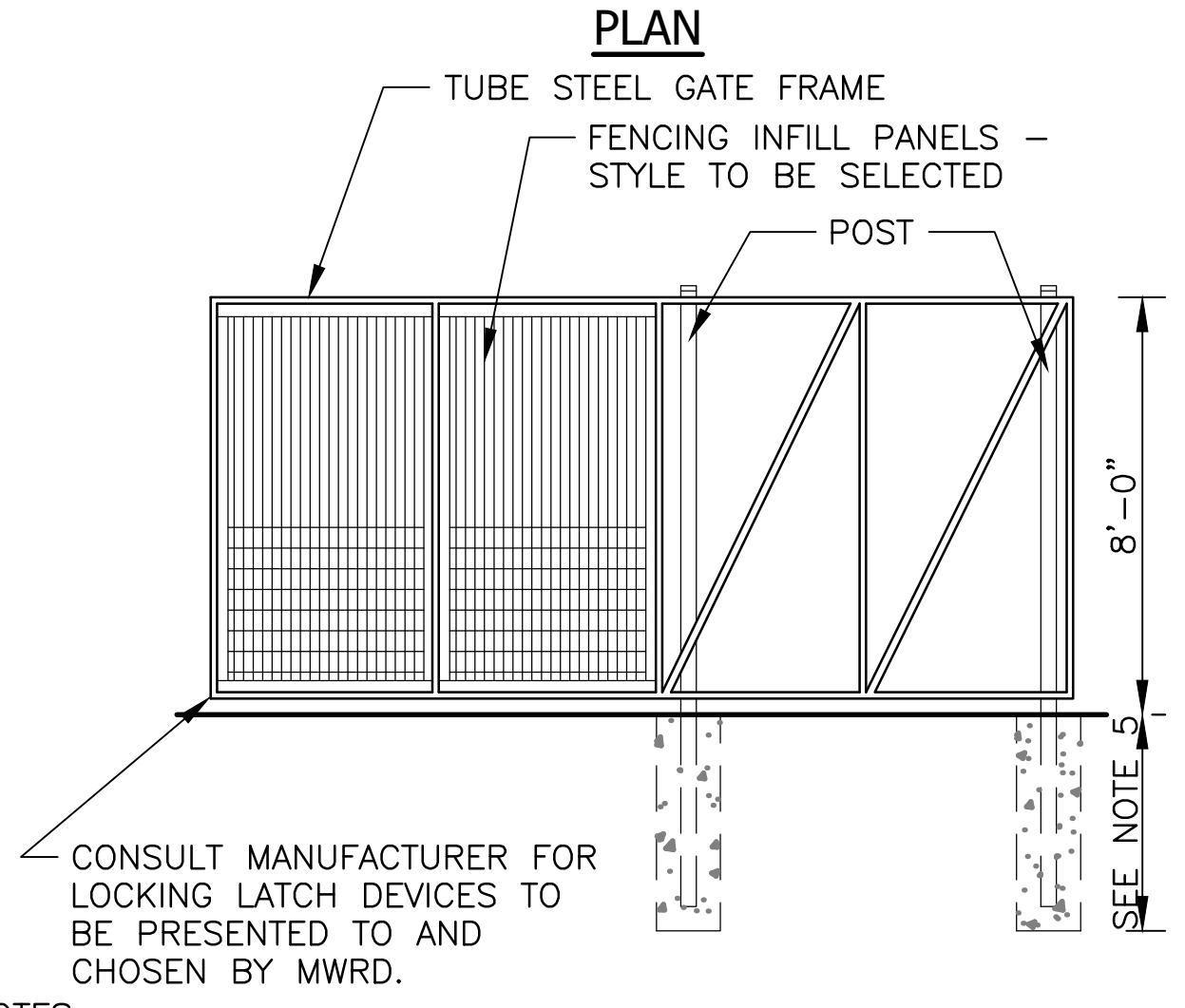


**9** 18" DRIVEWAY SECTION - PORTLAND CEMENT CONCRETE PAVEMENT  
SCALE: NTS

- NOTES**
- CURB AND GUTTER**
1. PROVIDE EXPANSION JOINTS AT ALL POINTS OF CURVATURE, POINT OF TANGENT, FIVE FEET ON EITHER SIDE OF ANY FRAMES, AND AT 50 FEET MAX. INTERVALS.
  2. THE FINISHED GRADE SHALL BE FLUSH WITH BACK OF THE CURB AT ALL LOCATIONS. THE GRADING SHALL BE SLOPED SUCH THAT THE WATER IS DIRECTED AWAY FROM THE ROADWAY PAVEMENT.
- BOLLARD**
1. STEEL PIPE FOR BOLLARD SHALL CONFORM TO ASTM A53, STEEL SEAMLESS PIPE, GRADE B, SCHEDULE 40. BOTTOM PLATE SHALL CONFORM TO ASTM A36. HEADED STUDS SHALL CONFORM TO THE REQUIREMENTS OF STRUCTURAL WELDING CODE - STEEL, AWS D1.1.
  2. BOLLARD ASSEMBLY SHALL BE HOT-DIP GALVANIZED IN ACCORDANCE WITH ASTM A123.
  3. ANCHOR BOLLARD IN PLACE WITH CONCRETE FOUNDATION. SUPPORT AND BRACE BOLLARD IN POSITION IN FOUNDATION EXCAVATIONS UNTIL CONCRETE HAS BEEN PLACED AND CURED. FILL BOLLARD SOLID WITH CONCRETE, MOUNDING TOP SURFACE.
  4. AFTER INSTALLATION, SURFACE OF BOLLARD ABOVE THE CONCRETE DRIVEWAY SURFACE SHALL BE PAINTED A "SAFETY YELLOW" COLOR.
- DRIVEWAYS & WALKWAYS**
1. INSTALL 3/4" EXPANSION JOINT AT INTERFACE OF BUILDING FOUNDATION OR FLOOR SLAB, AND DRIVEWAYS AND WALKWAYS. PROVIDE 5/8" DIA. X 18" LONG SMOOTH DOWELS AT 12" C-C AT MID-DEPTH OF DRIVEWAY/WALKWAY SLAB, EMBEDDED 9" INTO BUILDING SLAB/FOUNDATION. COAT DOWEL EXTENSION INTO EXISTING SLAB/FOUNDATION WITH GREASE TO PREVENT BOND.
  2. PROVIDE TIE BARS BETWEEN CURB AND DRIVEWAY, AS PER DETAIL 3.
  3. PROVIDE 2" MINIMUM OF CONCRETE COVER OVER REBAR.
- GUARDRAILS**
1. PROVIDE STEEL PLATE BEAM GUARDRAIL PER ILLINOIS STANDARD 630001-12.
- EXPANSION JOINTS**
1. UNLESS INDICATED OTHERWISE, THE EXPANSION JOINT FILLER SHALL BE 3/4" CLOSED CELL POLYETHYLENE FOAM AS MANUFACTURED BY SONNEBORN OR APPROVED EQUAL. EXPOSED EDGES OF EXPANSION JOINTS SHALL BE CAULKED WITH GRAY COLORED, MULTIPLE-COMPONENT HIGH-PERFORMANCE POLYURETHANE SEALANT, SONOLASTIC NP-2 AS MANUFACTURED BY SONNEBORN, OR APPROVED EQUAL. PROVIDE BACKER ROD FOR SEALANT INSTALLATION AS RECOMMENDED BY SEALANT MANUFACTURER.
  2. SET 3/4" INCHES EXPANSION JOINTS AT POINTS ABUTTING CONC CURB & GUTTER, AND AT BUILDING FOUNDATION ALONG DRIVEWAY OR WALKWAY.



**10** IDOT CLASS B CONCRETE PATCH PAVEMENT  
SCALE: NTS



**4** CANTILEVER SLIDING GATE  
NTS

- NOTES:
1. INSTALLATION TO BE COMPLETED IN ACCORDANCE WITH MANUFACTURER'S SPECIFICATIONS.
  2. DO NOT SCALE DRAWINGS.
  3. PROVIDE MANUAL GATE CAPABLE OF FUTURE MODIFICATION FOR MOTOR OPERATOR.
  4. CONTRACTOR TO INSTALL SENSOR LOOP, POWER/CONTROL CONDUITS, CONCRETE PAD AND MOUNT FOR MOTOR OPERATOR.
  5. BELOW GRADE GATE FOUNDATION TO MATCH WALL FOUNDATION IN DETAIL 5 ON C-12.

| Rev. | Description     | Appr. | Date    |
|------|-----------------|-------|---------|
| 1    | ADDENDUM NO. 8  | HC    | 2/11/26 |
| 2    | ADDENDUM NO. 11 | HC    | 4/13/26 |

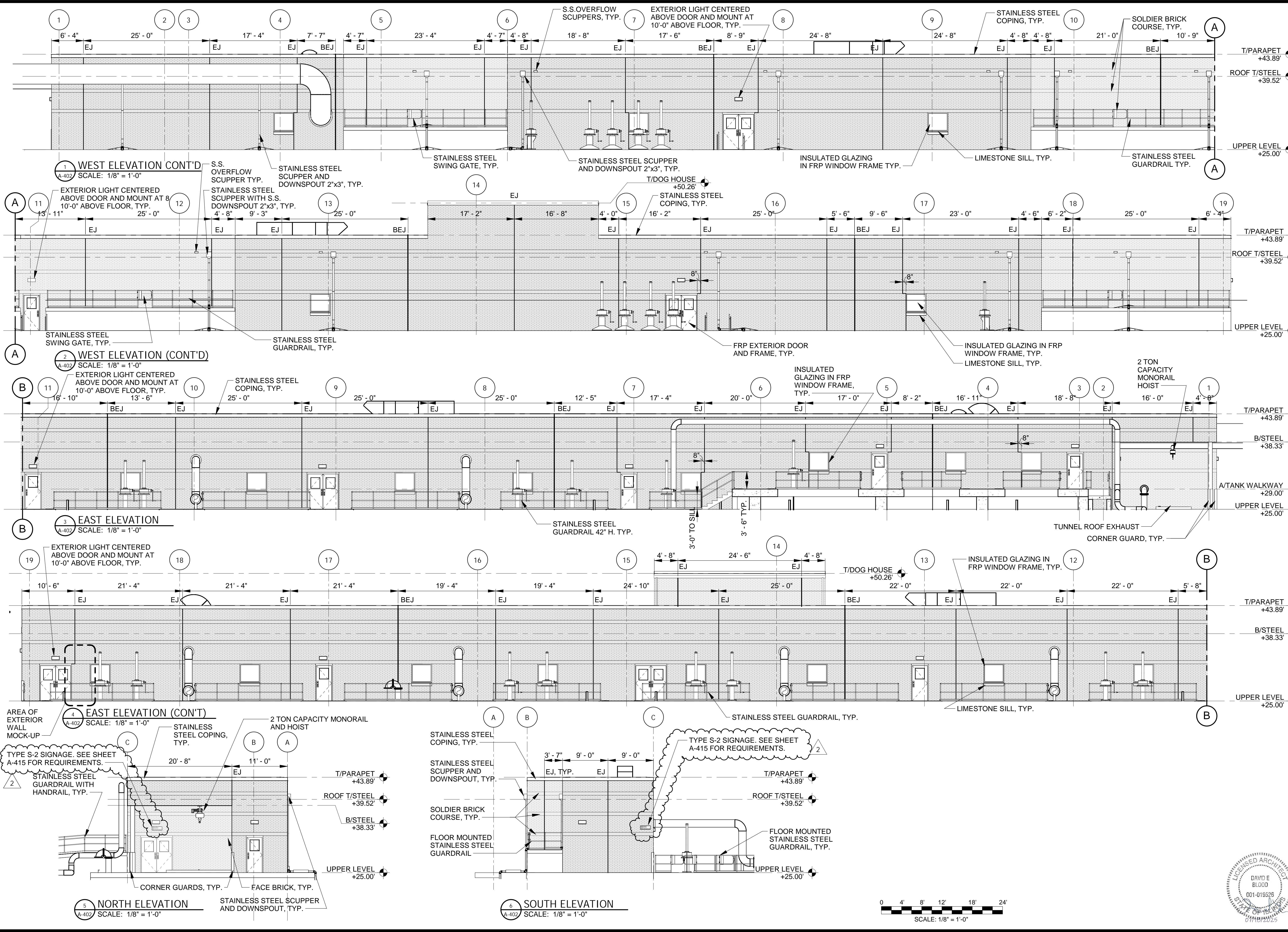
**METROPOLITAN WATER RECLAMATION DISTRICT**  
**OF GREATER CHICAGO**  
**AECOM**  
 PRUDENTIAL PLAZA ONE  
 130 E RANDOLPH STREET  
 SUITE 2400  
 CHICAGO, IL 60601, USA

Checked by: BP  
 Reviewed by: BP  
 Designed by: HHC  
 Drawn by: LK  
 Date: JULY 2025  
 Scale: AS SHOWN

**CONTRACT 21-092-3P**  
 OBRIEN WATER RECLAMATION PLANT  
 BATTERY E ACTIVATED SLUDGE FACILITY  
**STANDARD DETAILS - 5**

Sheet Number:  
**C-016**  
 Page Number: 32





| Rev. | Description     | Date     |
|------|-----------------|----------|
| 1    | ADDENDUM NO. 3  | 10/15/25 |
| 2    | ADDENDUM NO. 11 | 04/13/26 |

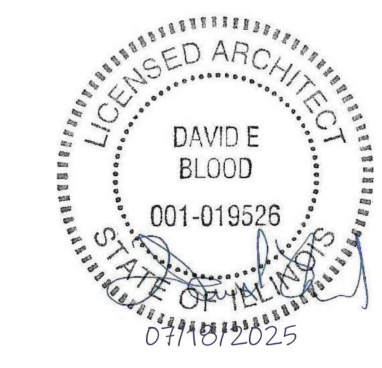
**METROPOLITAN WATER RECLAMATION DISTRICT OF GREATER CHICAGO**

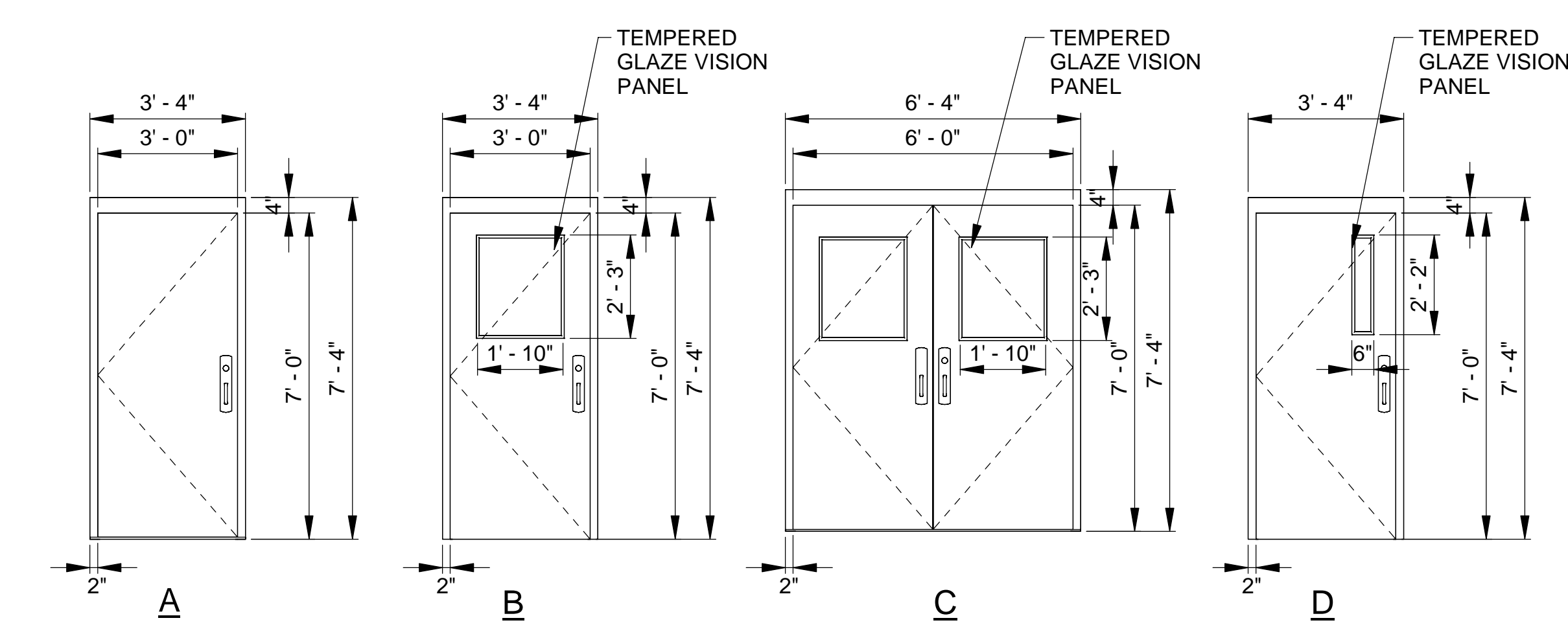
**Primer**  
550 W. Jackson Boulevard • Suite 600 • Chicago, Illinois 60601

**ACOM**  
PRUDENTIAL PLAZA ONE  
130 E RANDOLPH STREET  
SUITE 2400  
CHICAGO, IL 60601, USA

|              |              |
|--------------|--------------|
| Designed by: | Checked by:  |
| JP           | DB           |
| Drawn by:    | Reviewed by: |
| AC           | DB           |
| Date:        | Scale:       |
| 7/1/2025     | 1/8" = 1'-0" |

**CONTRACT 21-092-3P**  
OBRIEN WATER RECLAMATION PLANT  
BATTERY E ACTIVATED SLUDGE FACILITY  
OPERATING GALLERY  
ELEVATIONS





**DOOR TYPES**

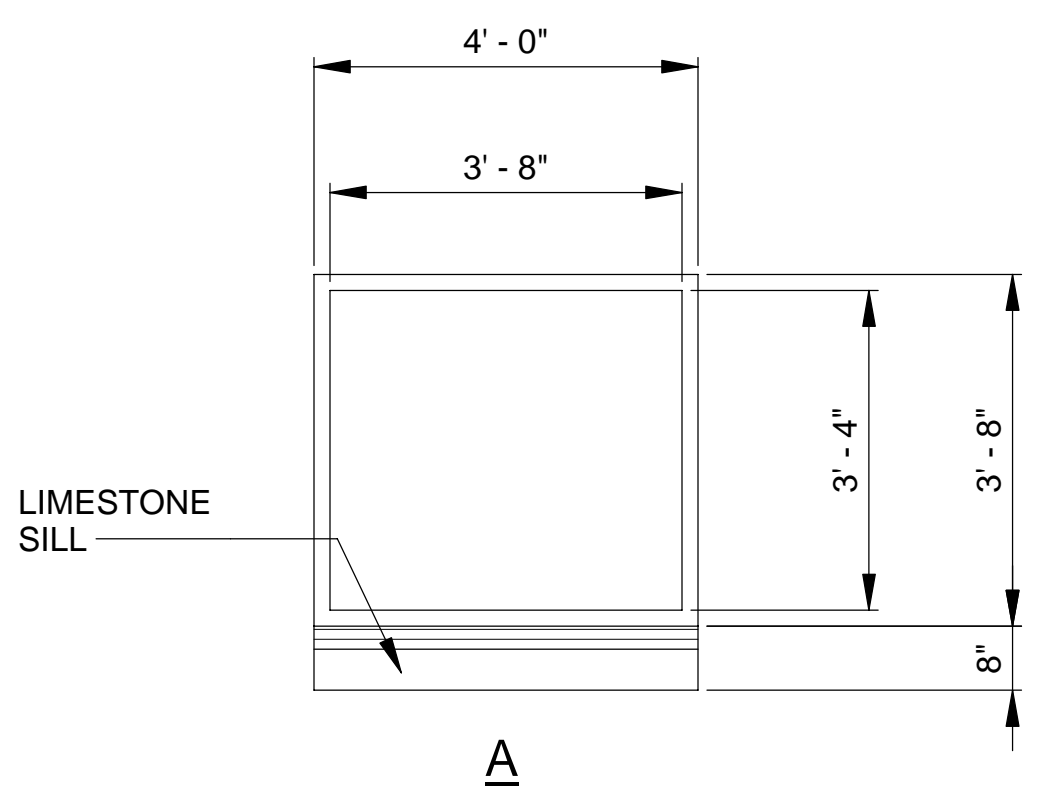
SCALE: 3/8" = 1'-0"  
REFER TO SCHEDULE FOR MATERIALS, FINISHES AND SPECIFIC FIRE RATINGS

**DOOR SCHEDULE NOTES:**

- CONTRACTOR TO INSTALL AND SUPPLY DOOR HARDWARE:
  - ALL LOCKSETS MUST ACCEPT THE DISTRICT'S STANDARD CORE, WHICH IS A 7-PIN, SMALL FORMAT INTERCHANGEABLE CORE (SFIC) "BEST LOCK" CYLINDERS FOR ALL LOCKSETS AND SHALL CERTIFY THAT THE LOCKSETS ACCEPT THE "BEST LOCK" CYLINDER CORE. SEE SPECIFICATION 08710.
- HANDLES, PULLS, LATCHES, LOCKS, AND OTHER OPERABLE PARTS ON DOORS SHALL BE 34 INCHES MINIMUM AND 48 INCHES MAXIMUM ABOVE THE FINISH FLOOR OR GROUND.

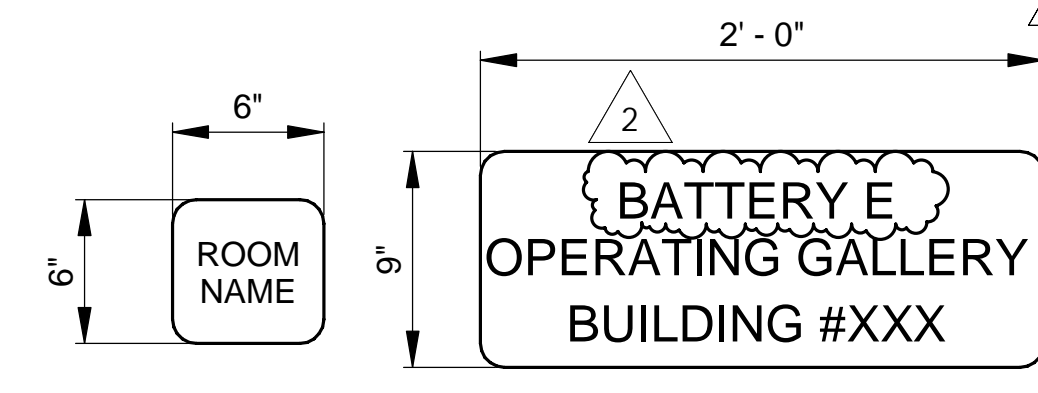
**SIGNAGE NOTES:**

- PROVIDE NON-GLARE SURFACE FOR ENTIRE SIGN TYPICALLY.
- PICTOGRAMS (SHOWN AS "GRAPHIC" IN SCHEDULE) SHALL APPEAR ON MINIMUM 6" HIGH CLEAR FIELD, ARE NOT REQUIRED TO BE RAISED AND MUST CONTRAST IN COLOR WITH BACKGROUND.
- MESSAGE SHOWN IN CAPITAL LETTERS IN SCHEDULE MUST BE MINIMUM 5/8" HIGH TACTILE CHARACTERS, MUST BE 32" RAISED MINIMUM, MUST BE ALL CAPITAL LETTERS WITH MINIMUM ONE STROKE WIDTH LETTER SPACING, MUST BE SAN SERIF TYPESTYLE AND MUST CONTRAST IN COLOR WITH BACKGROUND.
- RAISED CHARACTERS AND BRAILLE ON SIGNS MUST BE LOCATED 48 INCHES MINIMUM ABOVE THE FINISH FLOOR OR GROUND SURFACE, MEASURED FROM THE BASELINE OF THE LOWEST TACTILE CHARACTER, AND 60 INCHES MAXIMUM ABOVE THE FINISHED FLOOR OR GROUND SURFACE, MEASURED FROM THE BASELINE OF THE HIGHEST TACTILE CHARACTER.
- SIGNS SHALL COMPLY WITH SECTION 703. WHERE BOTH VISUAL AND TACTILE SIGNS ARE REQUIRED, EITHER ONE SIGN WITH BOTH VISUAL AND TACTILE CHARACTERS, OR TWO SEPARATE SIGNS, ONE WITH VISUAL, AND ONE WITH TACTILE CHARACTERS, SHALL BE PROVIDED.
- BRAILLE SHALL BE POSITIONED BELOW THE CORRESPONDING TEXT. IF TEXT IS MULTI-LINED, BRAILLE SHALL BE PLACED BELOW THE ENTIRE TEXT.



**WINDOW TYPES**

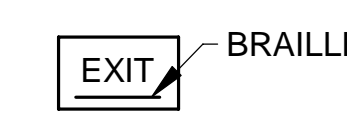
SCALE: NTS  
REFER TO SCHEDULE FOR MATERIALS



TYPE S-1      TYPE S-2

**SIGNAGE TYPES:**

- TYPE S-1: ROOM SIGNAGE
- TYPE S-2: BUILDING SIGNAGE
- TYPE S-3: EXIT SIGNAGE



TYPE S-3

**SIGNAGE TYPES**

SCALE: NTS

**FINISH LEGEND:**

|     |                       |
|-----|-----------------------|
| CMU | CONCRETE MASONRY UNIT |
| EXP | EXPOSED STRUCTURE     |
| PT  | PAINTED               |

| DOOR SCHEDULE                       |                         |              |              |      |          |        |                    |       |          |        |                               |                         |              |             |                                     |
|-------------------------------------|-------------------------|--------------|--------------|------|----------|--------|--------------------|-------|----------|--------|-------------------------------|-------------------------|--------------|-------------|-------------------------------------|
| DOOR NO.                            | ROOM NAME               | DOOR         |              |      |          |        | FIRE RATING (MIN.) | FRAME |          |        | HARDWARE SETS SEE SPEC. 08710 | DETAILS (DRAWING A-411) |              |             | NOTES                               |
|                                     |                         | WIDTH        | HEIGHT       | TYPE | MATERIAL | FINISH |                    | TYPE  | MATERIAL | FINISH |                               | DETAIL HEAD             | DETAIL JAMB  | DETAIL SILL |                                     |
| PROCESS CONTROL BUILDING EL. +25.20 |                         |              |              |      |          |        |                    |       |          |        |                               |                         |              |             |                                     |
| 01-101                              | TRANSFORMER ROOM        | 2'-8" V.I.F. | 7'-0" V.I.F. | A    | FRP      | FRP    | 1 HR               | A     | FRP      | FRP    | 4                             | 1/A-411 SIM.            | 5/A-411 SIM. | 1/A-411SIM  | REFER TO SHEET E-103 FOR MORE INFO. |
| LOWER LEVEL                         |                         |              |              |      |          |        |                    |       |          |        |                               |                         |              |             |                                     |
| 02-002A                             | UTILITY TUNNEL SHAFT    | 3'-0"        | 7'-0"        | D    | FRP      | FRP    | 1 HR               | B     | FRP      | FRP    | 7                             | 2/A-411                 | 6/A-411      | 2/A-411     |                                     |
| 02-003A                             | UTILITY TUNNEL SHAFT    | 3'-0"        | 7'-0"        | D    | FRP      | FRP    | 1 HR               | B     | FRP      | FRP    | 7                             | 2/A-411                 | 6/A-411      | 2/A-411     |                                     |
| 04-001A                             | LOWER OPERATING GALLERY | 3'-0"        | 7'-0"        | A    | SS       | SS     | 3 HR               | A     | SS       | SS     | 2                             | 2/A-411                 | 6/A-411      | 2/A-411     | FLOOR MTD. MAG HOLD OPEN            |
| 04-106A                             | STAIR                   | 3'-0"        | 7'-0"        | D    | FRP      | FRP    | 1 HR               | B     | FRP      | FRP    | 1                             | 2/A-411                 | 6/A-411      | 2/A-411     |                                     |
| METER BUILDING-T/SLAB               |                         |              |              |      |          |        |                    |       |          |        |                               |                         |              |             |                                     |
| 01-100                              | METER BUILDING          | 3'-0" V.I.F. | 7'-0" V.I.F. | A    | SS       | SS     | 3 HR               | A     | SS       | SS     | 2                             | 2/A-411                 | 6/A-411      | 2/A-411     | FLOOR MTD. MAG HOLD OPEN            |
| UPPER LEVEL                         |                         |              |              |      |          |        |                    |       |          |        |                               |                         |              |             |                                     |
| 04-101A                             | LOADING AREA            | 6'-0"        | 7'-0"        | C    | FRP      | FRP    | 0 HR               | C     | FRP      | FRP    | 3                             | 1/A-411 SIM.            | 5/A-411 SIM. | 1/A-411SIM  |                                     |
| 04-101B                             | UPPER OPERATING GALLERY | 3'-0"        | 7'-0"        | B    | FRP      | FRP    | 0 HR               | B     | FRP      | FRP    | 4                             | 1/A-411                 | 5/A-411      | 1/A-411     |                                     |
| 04-101C                             | UPPER OPERATING GALLERY | 3'-0"        | 7'-0"        | B    | FRP      | FRP    | 0 HR               | B     | FRP      | FRP    | 4                             | 1/A-411                 | 5/A-411      | 1/A-411     |                                     |
| 04-101D                             | UPPER OPERATING GALLERY | 3'-0"        | 7'-0"        | B    | FRP      | FRP    | 0 HR               | B     | FRP      | FRP    | 4                             | 1/A-411                 | 5/A-411      | 1/A-411     |                                     |
| 04-101E                             | UPPER OPERATING GALLERY | 6'-0"        | 7'-0"        | C    | FRP      | FRP    | 0 HR               | C     | FRP      | FRP    | 3                             | 1/A-411                 | 5/A-411      | 1/A-411     |                                     |
| 04-101F                             | UPPER OPERATING GALLERY | 6'-0"        | 7'-0"        | C    | FRP      | FRP    | 0 HR               | C     | FRP      | FRP    | 3                             | 1/A-411                 | 5/A-411      | 1/A-411     |                                     |
| 04-101G                             | UPPER OPERATING GALLERY | 3'-0"        | 7'-0"        | B    | FRP      | FRP    | 0 HR               | B     | FRP      | FRP    | 4                             | 1/A-411                 | 5/A-411      | 1/A-411     |                                     |
| 04-101H                             | UPPER OPERATING GALLERY | 3'-0"        | 7'-0"        | B    | FRP      | FRP    | 0 HR               | B     | FRP      | FRP    | 4                             | 1/A-411                 | 5/A-411      | 1/A-411     |                                     |
| 04-101J                             | UPPER OPERATING GALLERY | 3'-0"        | 7'-0"        | B    | FRP      | FRP    | 0 HR               | B     | FRP      | FRP    | 4                             | 1/A-411                 | 5/A-411      | 1/A-411     |                                     |
| 04-101K                             | UPPER OPERATING GALLERY | 6'-0"        | 7'-0"        | C    | FRP      | FRP    | 0 HR               | C     | FRP      | FRP    | 3                             | 1/A-411                 | 5/A-411      | 1/A-411     |                                     |
| 04-101L                             | UPPER OPERATING GALLERY | 3'-0"        | 7'-0"        | B    | FRP      | FRP    | 0 HR               | B     | FRP      | FRP    | 4                             | 1/A-411                 | 5/A-411      | 1/A-411     |                                     |
| 04-101M                             | UPPER OPERATING GALLERY | 6'-0"        | 7'-0"        | C    | FRP      | FRP    | 0 HR               | C     | FRP      | FRP    | 3                             | 1/A-411                 | 5/A-411      | 1/A-411     |                                     |
| 04-101N                             | UPPER OPERATING GALLERY | 6'-0"        | 7'-0"        | C    | FRP      | FRP    | 0 HR               | C     | FRP      | FRP    | 3                             | 1/A-411                 | 5/A-411      | 1/A-411     |                                     |
| 04-106B                             | STAIR                   | 3'-0"        | 7'-0"        | B    | FRP      | FRP    | 1 HR               | B     | FRP      | FRP    | 4                             | 1/A-411                 | 5/A-411      | 1/A-411     |                                     |
| 04-108A                             | UPPER OPERATING GALLERY | 3'-0"        | 7'-0"        | A    | FRP      | FRP    | 0 HR               | A     | FRP      | FRP    | 5                             | 1/A-411                 | 5/A-411      | 1/A-411     |                                     |
| ROOF LEVEL                          |                         |              |              |      |          |        |                    |       |          |        |                               |                         |              |             |                                     |
| 04-201A                             | DOG HOUSE               | 3'-0"        | 7'-0"        | B    | FRP      | FRP    | 0 HR               | B     | FRP      | FRP    | 6                             | 1/A-411 SIM.            | 5/A-411 SIM. | 1/A-411SIM  |                                     |

| WINDOW SCHEDULE |       |        |      |        |          |          |           |         |         |         |             |             |                             |
|-----------------|-------|--------|------|--------|----------|----------|-----------|---------|---------|---------|-------------|-------------|-----------------------------|
| Mark            | R.O.  |        | Type | FRAME  |          | GLAZING  |           | DETAILS |         |         | Sill Height | HEAD HEIGHT | NOTES                       |
|                 | WIDTH | HEIGHT |      | FINISH | MATERIAL | TYPE     | THICKNESS | HEAD    | JAMB    | SILL    |             |             |                             |
| 75              | 4'-0" | 3'-8"  | A    | FRP    | FRP      | TEMPERED | 1"        | 4/A-411 | 8/A-411 | 4/A-411 | 3'-0"       | 6'-8"       | INSUL.GLAZING PER IECC 2021 |
| 76              | 4'-0" | 3'-8"  | A    | FRP    | FRP      | TEMPERED | 1"        | 4/A-411 | 8/A-411 | 4/A-411 | 3'-0"       | 6'-8"       | INSUL.GLAZING PER IECC 2021 |
| 77              | 4'-0" | 3'-8"  | A    | FRP    | FRP      | TEMPERED | 1"        | 4/A-411 | 8/A-411 | 4/A-411 | 3'-0"       | 6'-8"       | INSUL.GLAZING PER IECC 2021 |
| 81              | 4'-0" | 3'-8"  | A    | FRP    | FRP      | TEMPERED | 1"        | 4/A-411 | 8/A-411 | 4/A-411 | 3'-0"       | 6'-8"       | INSUL.GLAZING PER IECC 2021 |
| 82              | 4'-0" | 3'-8"  | A    | FRP    | FRP      | TEMPERED | 1"        | 4/A-411 | 8/A-411 | 4/A-411 | 3'-0"       | 6'-8"       | INSUL.GLAZING PER IECC 2021 |
| 83              | 4'-0" | 3'-8"  | A    | FRP    | FRP      | TEMPERED | 1"        | 4/A-411 | 8/A-411 | 4/A-411 | 3'-0"       | 6'-8"       | INSUL.GLAZING PER IECC 2021 |
| 84              | 4'-0" | 3'-8"  | A    | FRP    | FRP      | TEMPERED | 1"        | 4/A-411 | 8/A-411 | 4/A-411 | 3'-0"       | 6'-8"       | INSUL.GLAZING PER IECC 2021 |
| 85              | 4'-0" | 3'-8"  | A    | FRP    | FRP      | TEMPERED | 1"        | 4/A-411 | 8/A-411 | 4/A-411 | 3'-0"       | 6'-8"       | INSUL.GLAZING PER IECC 2021 |
| 86              | 4'-0" | 3'-8"  | A    | FRP    | FRP      | TEMPERED | 1"        | 4/A-411 | 8/A-411 | 4/A-411 | 3'-0"       | 6'-8"       | INSUL.GLAZING PER IECC 2021 |
| 87              | 4'-0" | 3'-8"  | A    | FRP    | FRP      | TEMPERED | 1"        | 4/A-411 | 8/A-411 | 4/A-411 | 3'-0"       | 6'-8"       | INSUL.GLAZING PER IECC 2021 |
| 88              | 4'-0" | 3'-8"  | A    | FRP    | FRP      | TEMPERED | 1"        | 4/A-411 | 8/A-411 | 4/A-411 | 3'-0"       | 6'-8"       | INSUL.GLAZING PER IECC 2021 |
| 89              | 4'-0" | 3'-8"  | A    | FRP    | FRP      | TEMPERED | 1"        | 4/A-411 | 8/A-411 | 4/A-411 | 3'-0"       | 6'-8"       | INSUL.GLAZING PER IECC 2021 |
| 90              | 4'-0" | 3'-8"  | A    | FRP    | FRP      | TEMPERED | 1"        | 4/A-411 | 8/A-411 | 4/A-411 | 3'-0"       | 6'-8"       | INSUL.GLAZING PER IECC 2021 |
| 91              | 4'-0" | 3'-8"  | A    | FRP    | FRP      | TEMPERED | 1"        | 4/A-411 | 8/A-411 | 4/A-411 | 3'-0"       | 6'-8"       | INSUL.GLAZING PER IECC 2021 |
| 93              | 4'-0" | 3'-8"  | A    | FRP    | FRP      | TEMPERED | 1"        | 4/A-411 | 8/A-411 | 4/A-411 | 3'-0"       | 6'-8"       | INSUL.GLAZING PER IECC 2021 |
| 97              | 4'-0" | 3'-8"  | A    | FRP    | FRP      | TEMPERED | 1"        | 4/A-411 | 8/A-411 | 4/A-411 | 3'-0"       | 6'-8"       | INSUL.GLAZING PER IECC 2021 |
| 98              | 4'-0" | 3'-8"  | A    | FRP    | FRP      | TEMPERED | 1"        | 4/A-411 | 8/A-411 | 4/A-411 | 7'-0"       | 10'-8"      | INSUL.GLAZING PER IECC 2021 |
| 99              | 4'-0" | 3'-8"  | A    | FRP    | FRP      | TEMPERED | 1"        | 4/A-411 | 8/A-411 | 4/A-411 | 7'-0"       | 10'-8"      | INSUL.GLAZING PER IECC 2021 |
| 100             | 4'-0" | 3'-8"  | A    | FRP    | FRP      | TEMPERED | 1"        | 4/A-411 | 8/A-411 | 4/A-411 | 7'-0"       | 10'-8"      | INSUL.GLAZING PER IECC 2021 |
| 102             | 4'-0" | 3'-8"  | A    | FRP    | FRP      | TEMPERED | 1"        | 4/A-411 | 8/A-411 | 4/A-411 | 3'-0"       | 6'-8"       | INSUL.GLAZING PER IECC 2021 |
| 103             | 4'-0" | 3'-8"  | A    | FRP    | FRP      | TEMPERED | 1"        | 4/A-411 | 8/A-411 | 4/A-411 | 3'-0"       | 6'-8"       | INSUL.GLAZING PER IECC 2021 |

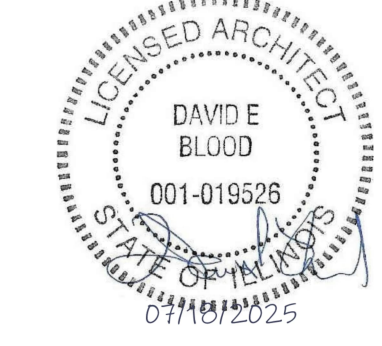
| SIGNAGE SCHEDULE            |             |           |                             |      |                             |                            |
|-----------------------------|-------------|-----------|-----------------------------|------|-----------------------------|----------------------------|
| ROOM NAME                   | ROOM NUMBER | SIGN TYPE | MESSAGE                     | QTY. | LOCATION                    | NOTES                      |
| T/BASE SLAB                 |             |           |                             |      |                             |                            |
| FERMENTER RAS/WAS PUMP ROOM | 04-109      | S-1       | FERMENTER RAS/WAS PUMP ROOM | 1    | RIGHT ABOVE DOOR            | SEE DRAWINGS FOR LOCATIONS |
| 01 LEVEL FF                 |             |           |                             |      |                             |                            |
| STAIRS                      | 04-008      | S-1       | STAIRS                      | 1    | LEFT SIDE DOOR 48" AFF O.C. | SEE DRAWINGS FOR LOCATIONS |
| STAIRS                      | 04-008      | S-3       | EXIT                        | 1    | LEFT SIDE DOOR 48" AFF O.C. | SEE DRAWINGS FOR LOCATIONS |
| UPPER OPERATING GALLERY     | 04-101      | S-3       | EXIT                        | 5    | LEFT SIDE DOOR 48" AFF O.C. | SEE DRAWINGS FOR LOCATIONS |
| RESTROOM                    | 04-108      | S-1       | RESTROOM                    | 1    | LEFT SIDE DOOR 48" AFF O.C. | SEE DRAWINGS FOR LOCATIONS |
| EXTERIOR FACADE             |             | S-2       | OPERATING GALLERY           | 2    | NE CORNER                   | SEE DRAWINGS FOR LOCATIONS |

| ROOM FINISH SCHEDULE |                             |                                     |               |              |                  |              |                  |              |                  |              |                  |                        |                |                |                       |
|----------------------|-----------------------------|-------------------------------------|---------------|--------------|------------------|--------------|------------------|--------------|------------------|--------------|------------------|------------------------|----------------|----------------|-----------------------|
| NO.                  | ROOM NAME                   | FLOOR MATERIAL/FINISH               | BASE MATERIAL | NORTH WALL   |                  | SOUTH WALL   |                  | EAST WALL    |                  | WEST WALL    |                  | CEILING MATERIAL       | CEILING FINISH | CEILING HEIGHT | NOTES                 |
|                      |                             |                                     |               | MATERIAL     | FINISH           | MATERIAL     | FINISH           | MATERIAL     | FINISH           | MATERIAL     | FINISH           |                        |                |                |                       |
| 02-001               | UTILITY TUNNEL              | CONCRETE/LIQUID HARDENER            | N/A           | CONCRETE     | DUSTPROOF SEALER | CONCRETE     | DUSTPROOF SEALER | CONCRETE     | DUSTPROOF SEALER | CONCRETE     | DUSTPROOF SEALER | CONCRETE               | UNFINISHED     | 8'-0"          |                       |
| 02-002               | UTILITY TUNNEL SHAFT        | CONCRETE/LIQUID HARDENER            | N/A           | CONCRETE     | DUSTPROOF SEALER | CONCRETE     | DUSTPROOF SEALER | CONCRETE     | DUSTPROOF SEALER | CONCRETE     | DUSTPROOF SEALER | CONCRETE               | UNFINISHED     | 8'-0"          |                       |
| 02-003               | UTILITY TUNNEL SHAFT        | CONCRETE/LIQUID HARDENER            | N/A           | CONCRETE     | DUSTPROOF SEALER | CONCRETE     | DUSTPROOF SEALER | CONCRETE     | DUSTPROOF SEALER | CONCRETE     | DUSTPROOF SEALER | CONCRETE               | UNFINISHED     | 8'-0"          |                       |
| 04-001               | LOWER OPERATING GALLERY     | CONCRETE/LIQUID HARDENER            | N/A           | CONCRETE     | DUSTPROOF SEALER | CONCRETE     | DUSTPROOF SEALER | CONCRETE     | DUSTPROOF SEALER | CONCRETE     | DUSTPROOF SEALER | CONCRETE               | UNFINISHED     | 17'-11"        |                       |
| 04-008               | EXIT ACCESS STAIR           | METAL STAIR/GALVANIZED              | N/A           | N/A          | N/A              | N/A          | N/A              | N/A          | N/A              | CONCRETE     | DUSTPROOF SEALER | N/A                    | N/A            | VARIES         |                       |
| 04-009               | EXIT ACCESS STAIR           | METAL STAIR/GALVANIZED              | N/A           | N/A          | N/A              | N/A          | N/A              | N/A          | N/A              | CONCRETE     | DUSTPROOF SEALER | N/A                    | N/A            | VARIES         |                       |
| 04-010               | EXIT ACCESS STAIR           | METAL STAIR/GALVANIZED              | N/A           | N/A          | N/A              | N/A          | N/A              | N/A          | N/A              | CMU          | PAINTED          | N/A                    | N/A            | VARIES         |                       |
| 04-101               | UPPER OPERATING GALLERY     | CONCRETE/LIQUID HARDENER            | N/A           | CMU/CONCRETE | PAINTED          | CMU          | PAINTED          | CMU          | PAINTED          | CMU          | PAINTED          | METAL DECK/STEEL BEAMS | PAINTED        | 14'-6"         |                       |
| 04-106               | STAIR                       | CONCRETE AND METAL STAIR/GALVANIZED | N/A           | CONCRETE     | PAINTED          | CMU/CONCRETE | PAINTED          | CONCRETE     | PAINTED          | CMU/CONCRETE | PAINTED          | METAL DECK/STEEL BEAMS | PAINTED        | 33'-3"         |                       |
| 04-107               | LOADING AREA                | CONCRETE/LIQUID HARDENER            | N/A           | N/A          | N/A              | MASONRY      | N/A              | N/A          | N/A              | MASONRY      | N/A              | CONCRETE               | PAINTED        | 13'-3"         | PAINT CONCRETE COLUMN |
| 04-108               | UNISEX TOILET ROOM          | CONCRETE/LIQUID HARDENER            | N/A           | CMU/CONCRETE | PAINTED          | CMU          | PAINTED          | CMU          | PAINTED          | CMU          | PAINTED          | METAL DECK/STEEL BEAMS | PAINTED        | 14'-6"         |                       |
| 04-109               | WAS/FERMENTER RAS PUMP ROOM | CONCRETE/LIQUID HARDENER            | N/A           | CONCRETE     | DUSTPROOF SEALER | CONCRETE     | DUSTPROOF SEALER | CONCRETE     | DUSTPROOF SEALER | CONCRETE     | DUSTPROOF SEALER | CONCRETE               | UNFINISHED     | 17'-11"        |                       |
| 04-201               | DOG HOUSE                   | CONCRETE                            | N/A           | CMU/CONCRETE | PAINTED          | CMU/CONCRETE | PAINTED          | CMU/CONCRETE | PAINTED          | CMU          | PAINTED          | METAL DECK             | PAINTED        | VARIES         |                       |

| Rev. | Description     | Appr. | Date     |
|------|-----------------|-------|----------|
| 1    | ADDENDUM NO. 7  | GD    | 12/17/25 |
| 2    | ADDENDUM NO. 11 | GD    | 04/13/26 |

**METROPOLITAN WATER RECLAMATION DISTRICT OF GREATER CHICAGO**  
  
 550 W. Jackson Boulevard • Suite 600 • Chicago, Illinois 60601  
 AECOM  
 Checked by: DB  
 Reviewed by: DB  
 Scale: NONE  
 Date: 7/1/2025  
 Designed by: JP  
 Drawn by: AC  
 Date: 7/1/2025  
 PRUDENTIAL PLAZA ONE  
 130 E RANDOLPH STREET  
 SUITE 2400  
 CHICAGO, IL 60601, USA

**CONTRACT 21-092-3P**  
 O'BRIEN WATER RECLAMATION PLANT  
 BATTERY E ACTIVATED SLUDGE FACILITY  
 OPERATING GALLERY  
**ARCHITECTURAL SCHEDULES**



GENERAL PLUMBING NOTES:

ALL THE FOLLOWING NOTES APPLIES TO ALL PLUMBING DRAWINGS.

- 1. EACH TRADE CONTRACTOR SHALL VISIT CONSTRUCTION SITE PRIOR TO BIDDING, EXAMINE SCOPE AND CONDITIONS OF OTHER CONTRACT WORK, EXAMINE EXISTING CONDITIONS AND ALL INTERFERENCES AND REQUIRED COORDINATION IN ORDER TO INCLUDE EFFECT OF SAID CONDITIONS IN THEIR BID. BID DRAWINGS ARE DIAGRAMMATIC AND DO NOT INDICATE ALL REQUIRED RELOCATIONS, OFFSETS, CHANGE IN ASPECT RATIOS, OR ROUTING CHANGES REQUIRED TO INTEGRATE WORK WITH ALL OTHER CONDITIONS OR TRADES. WORK INSTALLED BEFORE COORDINATING SO AS TO CAUSE INTERFERENCES WITH OTHER TRADES SHALL BE REMOVED AND REWORKED WITHOUT COST TO DISTRICT. COST OF PROVIDING SUCH RELOCATIONS, OFFSETS, SIZE, CHANGES, REROUTING, ETC. SHALL BE INCLUDED IN BID. CODE CONFORMING SCALED (1/4") COORDINATED DRAWINGS SHALL BE PREPARED BY EACH TRADE TO FACILITATE AND VERIFY FIT AND CONGRUENCE OF THEIR INSTALLATION WITH OTHER TRADES.
2. THIS CONTRACTOR SHALL FURNISH, INSTALL AND CONNECT ALL EQUIPMENT IN ACCORDANCE WITH THE CHICAGO BUILDING CODE AND INTERNATIONAL PLUMBING CODE. AFTER EACH WORK DAY, CONTRACTOR SHALL CLEAN ALL WORK AREAS AND REMOVE ALL DEBRIS.
3. THIS CONTRACTOR SHALL PAY ALL PERMIT FEES, PLAN REVIEW FEES, LICENSE FEES, INSPECTIONS FEES AND TAXES APPLICABLE TO THEIR DIVISION AND SHALL BE INCLUDED IN THE BASE BID AS PART OF THEIR CONTRACT.
4. CONTRACTOR SHALL SUBMIT SCALED, LAYOUT DRAWINGS (SHOP DRAWINGS) OF PIPE AND FITTINGS INCLUDING (BUT NOT LIMITED TO) PIPE SIZES, LOCATIONS, ELEVATIONS AND SLOPES OF HORIZONTAL RUNS, WALL AND FLOOR PENETRATIONS AND CONNECTIONS. IN ADDITION, SHOP DRAWINGS SHALL INDICATE THE INTERFACE AND SPATIAL RELATIONSHIPS BETWEEN PIPING AND APPROXIMATE EQUIPMENT.
5. THIS CONTRACTOR SHALL FURNISH AS-BUILT CONTRACT DOCUMENTS TO THE DISTRICT/ ENGINEER BEFORE FINAL PAYMENT WILL BE ISSUED. THE CONTRACT RECORD DOCUMENTS SHALL BE SUBMITTED IN AUTOCAD DRAWINGS FORM.
6. THIS CONTRACTOR SHALL GUARANTEE ALL WORK AND MATERIAL FOR ONE YEAR AFTER COMPLETION AGAINST ALL DEFECTS OF MATERIAL, EQUIPMENT AND WORKMANSHIP.
7. THIS CONTRACTOR SHALL PROVIDE ALL MINOR ITEMS WHICH ARE OBVIOUSLY AND REASONABLY NECESSARY TO COMPLETE THE INSTALLATION AND USUALLY INCLUDED IN SIMILAR WORK EVEN THOUGH NOT NECESSARILY MENTIONED IN THE CONTRACT DOCUMENTS. SUCH ITEMS INCLUDE NUTS AND BOLTS, ANCHORS, HANGERS, BRACKET SLEEVES, MINOR OFFSETS IN PIPING BECAUSE OF UNFORESEEN CONDITIONS, ETC.
8. CONTRACTOR SHALL PROVIDE A WRITTEN "REQUEST FOR INFORMATION" TO THE ARCHITECT AND/OR ENGINEER TO ALLOW FOR CLARIFICATION OF ANY INCONSISTENCIES THAT MAY APPEAR ON THE CONTRACT DOCUMENTS AND SPECIFICATIONS.
9. PLANS AND SPECIFICATIONS GOVERN WHERE THEY EXCEED CHICAGO CODE REQUIREMENTS 9. AND INTERNATIONAL PLUMBING CODE.
10. PLUMBING CONTRACTOR SHALL CONFER AND COORDINATE CLEARANCES, CHASES, RECESSES AND OPENINGS WITH OTHER TRADES FOR THIS WORK.
11. DRAWINGS ARE DIAGRAMMATIC AND INTENDED TO SHOW APPROXIMATE LOCATIONS UNLESS SPECIFICALLY DIMENSIONED. COORDINATE THE WORK WITH ALL TRADES TO AVOID INTERFERENCE. PLUMBING WORK THAT IS INSTALLED WHICH INTERFERES WITH THE WORK OF OTHER TRADES OR DEVIATES FROM THE SPACE PROVIDED BY THE ARCHITECT DUE TO THE LACK OF COORDINATION SHALL BE CHANGED AT NO ADDITIONAL COST TO THE DISTRICT.
12. PROVIDE BACK FLOW PREVENTERS AND TEST IN ALL LOCATIONS REQUIRED BY CODE.
13. PROVIDE MAXIMUM HEADROOM IN ALL PIPED LOCATIONS.
14. PROVIDE ISOLATION VALVES FOR COLD, HOT, AND HOT WATER RETURN SYSTEMS AT EACH FIXTURE, FIXTURE GROUP AND SYSTEM COMPONENTS TO ALLOW FOR PROPER MAINTENANCE.
15. INSTALL EQUIPMENT PER MANUFACTURERS INSTRUCTIONS AND ALL APPLICABLE CODES. PROVIDE PANS AND DRAIN LINES.
16. INSULATE ALL PIPES RACKED TO OUTSIDE WALLS SUBJECT TO FREEZING. AS SPECIFIED IN SECTION 15083.
17. PROVIDE ALL PROPER BUILDING PENETRATIONS TO MEET ALL MANUFACTURERS INSTRUCTIONS AND ALL APPLICABLE CODES.
18. INSULATE ALL HOT, COLD AND RETURN WATER LINES. INSULATE ALL STORM PIPING. AS SPECIFIED IN SECTION 15083.
19. PROVIDE AT EACH FIXTURE SUPPLY CONNECTION, BOTH HOT AND COLD WATER, AN AIR CHAMBER NOT LESS THAN 12" LONG, ONE SIZE LARGER THAN THE FIXTURE SUPPLY.
20. PROVIDE LOCAL STOPS OR VALVES AT ALL WATER CONNECTIONS TO PLUMBING FIXTURES. ISOLATE RISERS AT CONNECTIONS TO MAINS WITH SHUT-OFF VALVES. PROVIDE DRAIN COCKS TO FACILITATE SERVICING.
21. DISSIMILAR METALS SHALL BE EFFECTIVELY ISOLATED FROM EACH OTHER TO AVOID GALVANIC ACTION. DI-ELECTRIC UNIONS ARE TO BE USED AT ALL SUCH CONNECTIONS.
22. INSTALL ALL PIPING TO AVOID INTERFERENCE WITH ELECTRICAL AND MECHANICAL EQUIPMENT AND STRUCTURAL FRAMING. WATER AND DRAIN LINES ARE NOT PERMITTED OVER OR UNDER ELECTRICAL PANELS OR DEDICATED ELECTRICAL SPACES.
23. THE CONTRACTOR SHALL PROVIDE AND INSTALL FAUCETS, TRAPS, STOPS, GATE VALVES, WATER HAMMER ARRESTERS AND CLEAN OUT COVERS. FURNISH AND INSTALL ALL NECESSARY TRIM FOR A COMPLETE CONNECTED PLUMBING SYSTEM READY FOR OPERATION.
24. PROVIDE CLEANOUTS AT BASE OF RISERS AND ON RISER STACKS. PROVIDE CLEANOUTS IN ACCESSIBLE LOCATIONS, TYP ALL.
25. ALL PENETRATIONS THROUGH FIRE-RATED WALLS AND FLOORS SHALL BE MADE FIRE SAFE IN COMPLIANCE WITH THE CITY OF CHICAGO BUILDING CODE. RATING SHALL MEET OR EXCEED RATING OF WALL OR FLOOR. ALL HOLES THROUGH FLOORS SHALL BE CAULKED AND SEALED AIR AND WATERTIGHT TO RESTRICT THE PASSAGE OF SMOKE, SOUND OR FLAMES.
26. ALL SANITARY, STORM AND VENT LINES SHALL BE PITCHED AS FOLLOWS:
3" AND SMALLER - 1/4" PER 1'-0"
4" AND LARGER - 1/8" PER 1'-0"
27. PROVIDE ACCESS PANELS IN CEILINGS AND AT WALLS FOR EQUIPMENT OR DEVICE REQUIRING REGULAR ACCESS, MAINTENANCE OR TESTING INSTALLED AT INACCESSIBLE LOCATIONS. ALL ACCESS PANELS ARE TO BE COORDINATED WITH THE ARCHITECT AND REVIEWED PRIOR TO INSTALLATION. MIN. ALLOWABLE ACCESS PANEL SIZE IS 12X12.

PLUMBING SYMBOLS table with columns for UNDERGROUND and SUSPENDED, listing pipe types (DOMESTIC COLD WATER, DOMESTIC HOT WATER, etc.) and symbols for various components (STRAINER, CHECK VALVE, BALL VALVE, etc.).

- 28. EACH GROUP OF FIXTURES SUPPLIED WITH A BRANCH FROM THE MAIN SHALL HAVE AN ACCESSIBLE ISOLATION VALVE NEAR THE POINT OF CONNECTION TO THE MAIN.
29. CATCHBASINS AND MANHOLES ARE THE RESPONSIBILITY OF THE SITE CONTRACTOR.
30. OFFSET VENTS WHERE REQUIRED SO THAT NO VTR IS CLOSER THAN 15'0" FROM ANY OUTSIDE AIR INTAKE. REFER TO APPROVED MECHANICAL DRAWINGS FOR EXACT OAI LOCATIONS.
31. FINISHED PIPING SHALL BE TESTED PER SKOKIE PLUMBING CODE SECTION 890.1920 AND INTERNATIONAL PLUMBING CODE. FLUSHED AND CHLORINATED PER CODE 18-29-610.1.
32. PRIOR TO FINAL ACCEPTANCE BY DISTRICT, CONTRACTOR SHALL CLEAN ALL FIXTURES AND REMOVE ALL LABELS. CONTRACTOR SHALL ALSO ROD ALL FLOOR DRAINS TO CATCHBASIN AND REMOVE ALL DEBRIS FROM CATCHBASIN.

PLUMBING PIPING SCHEDULE table with columns for LEGEND, SERVICE, DIAMETER RANGE (INCH), MATERIAL, LOCATION, COATING (INTERIOR, EXTERIOR), JOINT TYPE, MIN/MAX TEMP (F), MAX WORKING PRESSURE (PSI), PIPE TESTING, and REMARKS.

- NOTES:
1. SEE TABLE 1 IN GSPC FOR PIPING COLOR CODING SCHEDULE.
2. SEE PIPING AND INSULATION APPLICATIONS TABLE ON SHEET PB-001

FIXTURE CONNECTION MATRIX

Table mapping TAG, FIXTURE / EQUIPMENT, and FIXTURE ROUGH-IN & FINAL CONNECTION (MIN.) to SPECIAL REQUIREMENTS.

NOTE: PROVIDE WATER HAMMER ARRESTORS ON ALL PLUMBING SUPPLY PIPING.

PIPING & INSULATION APPLICATIONS

Table mapping PIPE IDENTIFICATION, PIPE, FITTINGS, JOINTS, and INSULATION to specific material and application details.

INCOMING WATER SERVICE
SUSPENDED WATER - 6" & OVER
SUSPENDED WATER - 5" & LESS
UNDERGROUND SANITARY WASTE & VENT
SUSPENDED SAN. W. & V. 3" & OVER
SUSPENDED SAN. W. & V. 2" & LESS

- GENERAL NOTES:
1. A CLEANOUT SHALL BE INSTALLED AT OR NEAR THE BASE OF EACH WASTE STACK.
2. SEE ARCHITECTURAL DRAWINGS FOR EXACT LOCATIONS OF PLUMBING FIXTURES, WALL LOCATIONS, FIXTURE ELEVATIONS ETC.
3. COORDINATE PIPING MATERIAL WITH PROJECT SPECIFICATIONS. THE MORE STRINGENT VERSION SHALL BE ACCEPTED.
4. PIPE MATERIALS, FITTINGS AND JOINTS MUST MEET APPLICABLE BUILDING CODE REQUIREMENTS.
5. GENERAL CONTRACTOR TO COORDINATE ALL WORK BETWEEN SITE AND BUILDING PLUMBING CONTRACTORS.
6. ALL SUSPENDED PIPING IS INDOOR.

Revision table with columns for Rev., Description, Appr., and Date.

Project information including METROPOLITAN WATER RECLAMATION DISTRICT OF GREATER CHICAGO, CECOM logo, and contact details for CCM Engineers, Ltd.

Contract information: CONTRACT 21-092-3P, O'Brien Water Reclamation Plant, Battery E Activated Sludge Facility, and PLUMBING NOTES, SYMBOLS, AND ABBREVIATIONS.

Sheet and Page information: Sheet Number: PB-001, Page Number: 347, and a professional engineer seal for Paul Ghassan, Illinois.